



OIEO £400,000
Coleman Way, Maidstone, ME173TS

t: 01622 934222 e: info@honeydellestateagents.co.uk



honeydell
ESTATE AGENTS



Full Description

A STUNNING THREE BEDROOM HOUSE located in the sought after Langley Park Development.

Built in 2020 by Taylor Wimpey this attractive property offers comfortable, spacious family accommodation.

On the ground floor you will find a living room that leads into a modern fitted kitchen diner and cloakroom.

To the first floor there are three bedrooms and family bathroom. The master bedroom features a lovely ensuite shower room.

The property also benefits from a good sized and low maintenance rear garden, detached garage and driveway, gas central heating, UPVC double glazing and remainder of the NHBC warranty.

The position of this property really makes it stand out from others. There is open land opposite which provides lovely far-reaching semi-rural views.

Also, within close proximity is a shopping area that includes an Aldi, Costa and Toby Carvery

Langley Park Primary Academy sits on the doorstep and Maidstone town centre is within good reach where you can find some excellent shopping and dining experiences.



Main Features

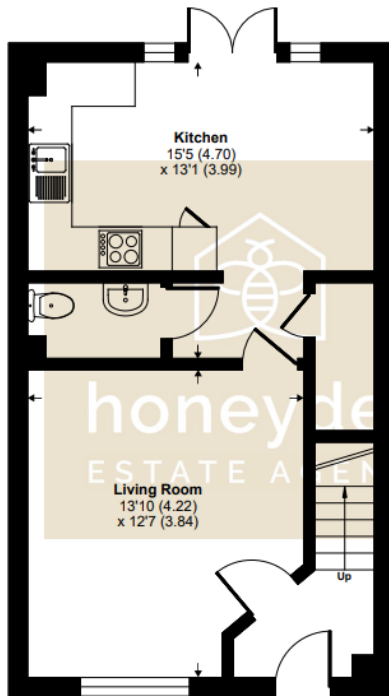
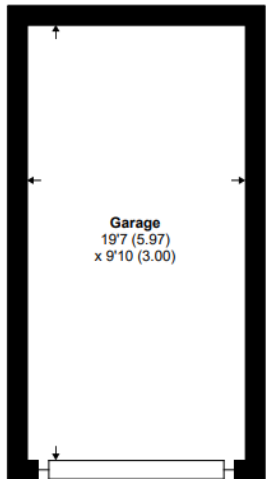
- Beautifully Presented 3 Bedroom Detached House
- Ensuite to Master Bedroom
- Downstairs Cloakroom
- Modern Fitted Kitchen/Diner
- Detached Garage and Parking
- Low Maintenance Rear Garden
- Close to Local School & Shops
- Lovely Views
- NHBC Warranty



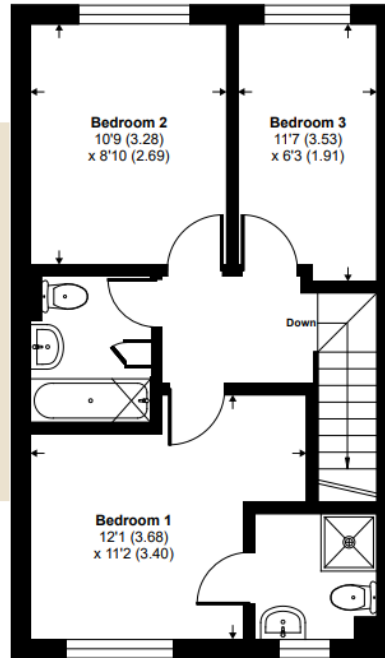
Floorplans & Dimensions

Coleman Way, ME17

Approximate Gross Internal Area = 80 sq m / 862 sq ft
 Approximate Garage Internal Area = 18 sq m / 193 sq ft
 Approximate Total Internal Area = 98 sq m / 1055 sq ft



GROUND FLOOR



FIRST FLOOR

Illustration for identification purposes only.
 measurements are approximate, not to scale.
 © Ashsands.com 2024 - Produced for Honeydell Estate Agents

Score	Energy rating	Current	Potential
92+	A		
81-91	B		87 B
69-80	C	71 C	
55-68	D		
39-54	E		
21-38	F		
1-20	G		