



£750 pcm

Longham Copse, Downswood, Kent ME15 8TL

t: 01622 934222 e: info@honeydellestateagents.co.uk



honeydell
ESTATE AGENTS



Main Features

- Refurbished and neutrally decorated
- Popular residential location
- Close to local amenities
- EPC Rating: D
- Parking
- Communal garden
- Available now
- Security deposit £865
- Holding deposit £173



Full Description

Well presented ground floor studio apartment located close to local amenities in the popular Downswood area.

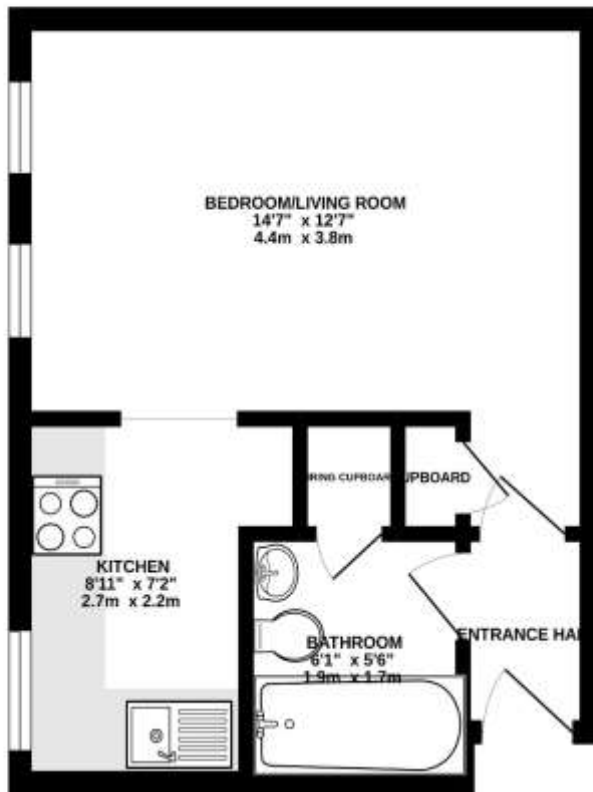
This light and airy property has been refurbished and neutrally decorated throughout with new fitted kitchen, bathroom, carpets, and flooring. The property benefits from communal gardens and parking.

Downswood is a popular residential location with its own local amenities including shops and doctors' surgery. Excellent communication links are close at hand including Bearsted Railway Station and easy access to the M20 and M2 motorway networks providing links to London and the Kent Coast. Bearsted village is a short distance away with its own array of bars, restaurants and pubs and beautiful village green, as is Maidstone Town Centre which has a range of excellent facilities.



Floorplans & Dimensions

GROUND FLOOR
268 sq.ft. (24.9 sq.m.) approx.



Score	Energy rating	Current	Potential
92+	A		
81-91	B		
69-80	C		80 C
55-68	D	65 D	
39-54	E		
21-38	F		
1-20	G		

TOTAL FLOOR AREA: 268 sq.ft. (24.9 sq.m.) approx.

Whilst every attempt has been made to ensure the accuracy of the floorplan contained herein, measurements of doors, windows, rooms and any other items are approximate and no responsibility is taken for any error, omission or mis-statement. This plan is for illustrative purposes only and should be used as such by any prospective purchaser. The services, systems and appliances shown herein have not been tested and no guarantee is given as to their operability or efficiency. Call us to find out more.
Made with Metropix 0.2022